

DATA SHEET - MF Inline 1P 1/2" m-f

Pressure independent flow controller. Ensures optimal flow control.



Top left: MF Inline 1P 1/2" m-f

Bottom right: MF Inline 1P 1/2" m-f - dimensions (in mm)

Specifications

Mounting: into the piping and/or to a flexible water hose

Connection inlet: G 1/2" (BSPP) male, flat face

Connection outlet: G 1/2" (BSPP) female, flat face

Total length (including thread): 51.5 mm

Thread length male (including thread undercut): 11.5 mm

Thread depth female (including thread undercut): 10.5 mm

Widest point: 26.5 mm

Weight: 80 g

Housing material: brass (4MS)

Finish outside: none

Finish water contact area: n/a

Max. particle size: 400 µm

Max. operating temperature: 90 °C *

Flow rate versions

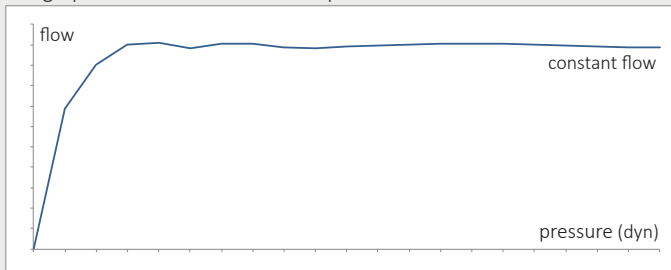
5.0 l/min (150-1.000 kPa/dyn)

7.8 l/min (200-1.000 kPa/dyn)

Constant flow: pressure independent

Flow deviation within mentioned dynamic pressure range: max. 2%. **

The graph shows the constant flow performance of Marine Flow



* In case of permanent or semi-permanent use at 500 kPa/dyn or more combined with 60 °C or more, please contact us at info@marine-flow.com.

** Counter-pressure in the system might somewhat influence the flow rate.

Figure number: 1140

Product overview

Optimal flow control

The Marine Flow Inline creates a constant flow through its unique property of pressure independence. As such it ensures savings, optimal user comfort and system stabilisation. Installed into the piping towards both inlets of mixer taps, the product significantly reduces temperature fluctuations.

Certified constant flow

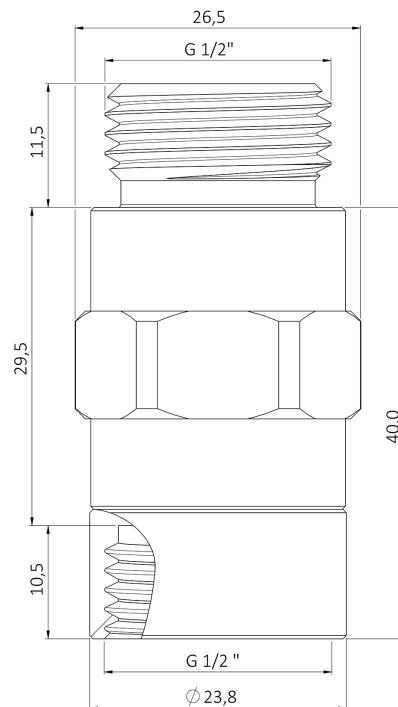
Marine Flow products are pressure independent and as such provide a constant flow as certified by Kiwa, Netherlands (BRL-K635). The products meet the requirements for Kiwa Water Mark and primary European drinking water standards. All Marine Flow products contain one or more integrated MF Flow Controller(s). It is uniquely certified for pressure independence and long term operation.

Application

In the piping or connected to a flexible water hose.

Key properties

- Optimal flow control as a result of constant flow
- Optimal water temperature stability
- Definition of peak volume demand
- Water- and energy savings
- System stabilisation
- System pressure loss reduction



Disclaimer: Marine Flow aim to provide correct and up to date information at all times. Marine Flow, or companies belonging to its group, are not liable for possible consequences of any incorrect information provided in this document by mistake. Marine Flow reserve the right to make changes.

Note: later versions of this document replace and void older versions. The general terms and conditions of Marine Flow are applicable. In the general terms and conditions Marine Flow has limited its liability. Current versions of this document and of the general terms and conditions of Marine Flow are available at www.marine-flow.com

General terms and conditions of installation and use Marine Flow

Marine Flow is a trade name of MIT Investments BV., The Netherlands, registered with the Chamber of Commerce under number 84229691.

These terms and conditions have been filed with the Chamber of Commerce.

Applicability and formation of agreement

1. These General terms and conditions of installation and use apply, with the exclusion of customer's terms and conditions, to the installation and use of all Marine Flow products.
2. In addition to and without prejudice to the General terms and conditions of sale and delivery, these General terms and conditions of installation and use apply to the legal relationship between Marine Flow, including third parties engaged by Marine Flow, on the one hand, and one or more customers and / or users on the other hand, in the context of the installation and use of Marine Flow products.

Use of products

3. The customer must at all times follow the instructions and directions regarding the use of Marine Flow products. Any guarantee and / or liability of Marine Flow will be null and void if the instructions and directions have not been fully followed.

Exonerations

4. Installation is entirely at the risk of the customer. Marine Flow is not liable for any damage caused during installation, unless the damage was caused by intent or deliberate recklessness on the part of Marine Flow. In no case is Marine Flow liable for consequential damage and / or indirect damage. Without prejudice to the above, the following limitations of Marine Flow's liability apply.
5. Marine Flow offers a guarantee with respect to the products if and insofar this has been agreed in writing between the parties upon conclusion of the agreement or insofar as Marine Flow is legally obliged to do so.
6. Subject to any mandatory obligations arising from the law, Marine Flow is never obliged to compensate any loss, except in the event of intent or willful recklessness.
7. Any liability for consequential loss or loss of profits, indirect loss, lost profits and loss owing to stoppage of the customer and/or the customer's customers is explicitly excluded under all circumstances. Liability is always limited to the amount insured or paid by Marine Flow. In the event of loss that is not or only partially covered, Marine Flow's liability is always limited to the invoice amount of the specific delivery or partial delivery.

Other

8. Should any provisions of these General terms and conditions of installation and use be null and void, be annulled, or be unenforceable, this will not have any consequences for the validity of all other provisions or the agreement.
9. If and insofar Marine Flow cannot invoke any provision of these General terms and conditions of installation and use or the agreement, then said provision will be construed as having a content and purport that is as much as possible in accordance with the original provision, allowing it to be invoked by Marine Flow.
10. All costs, judicial and extrajudicial, related to the collection of sums owed to Marine Flow are fully for the account of the customer.
11. The legal relationship between Marine Flow and the customer will be governed by Dutch law, under exclusion of the Vienna Sales Convention, and all disputes will be settled exclusively by the competent court in the District of Amsterdam, The Netherlands.